

<ul style="list-style-type: none"> Echanis Turbines Riddle Mt. Turbines East Ridge Turbines West Ridge Turbines Simulation Points Scenic Byways Proposed Transmission Routes Route Options 	<p>Land Administration</p> <ul style="list-style-type: none"> Bureau of Land Management State U. S. Fish and Wildlife Private
--	--

Project and Photo Simulation Locations

North Steens Echanis 230-kV Transmission Line Project

N
S

0 5 10 Miles

ENTRIX

DRAFT

This map and all data contained within are supplied as is with no warranty. ENTRIX, Inc. expressly disclaims responsibility for damages or liability from any claims that may arise out of the use or misuse of this map. It is the sole responsibility of the user to determine if the data on this map meets the user's needs. This map was not created as survey data, nor should it be used as such. It is the user's responsibility to obtain proper survey data, prepared by a licensed surveyor, where required by law.



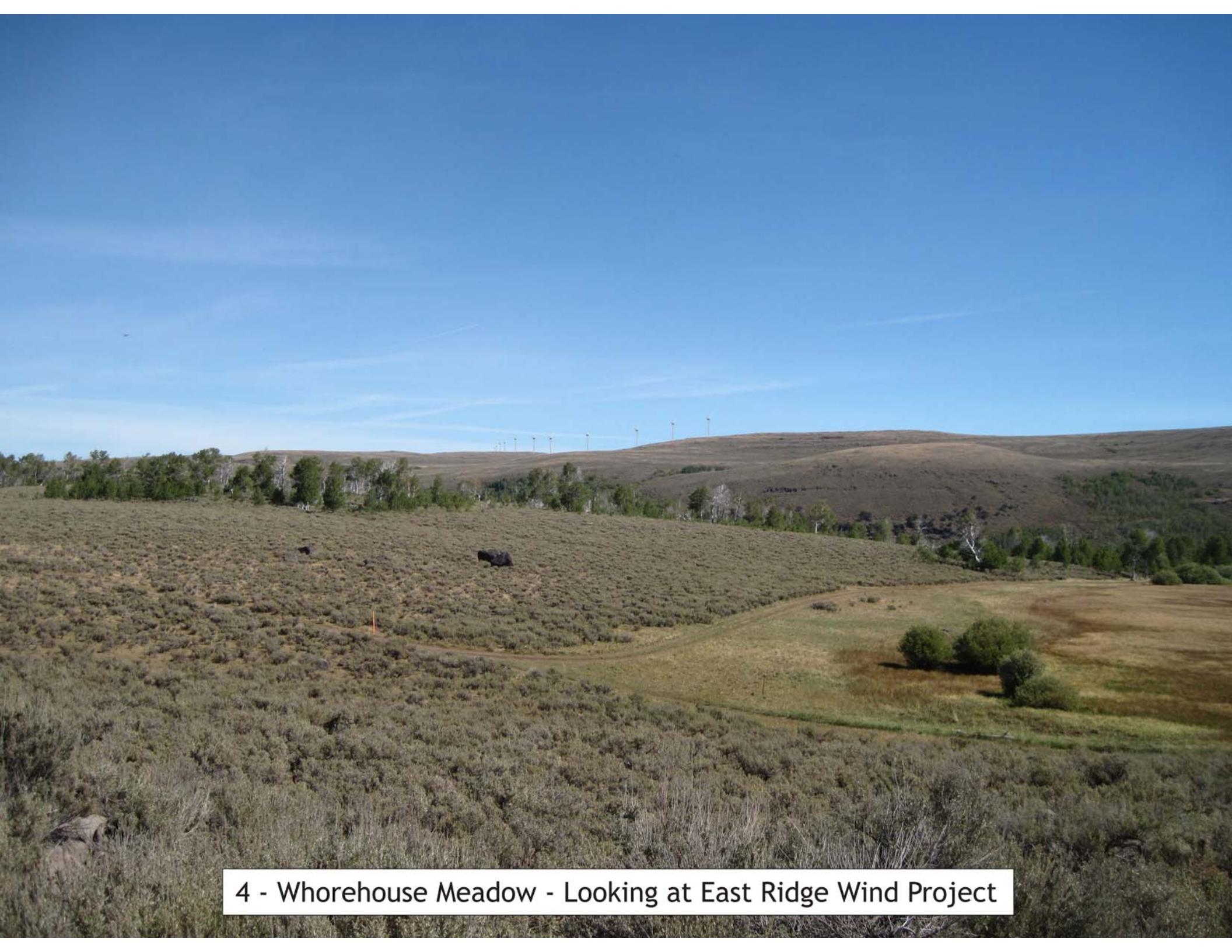
1 - Round Barn - Looking at transmission line & Riddle Mountain Wind Project



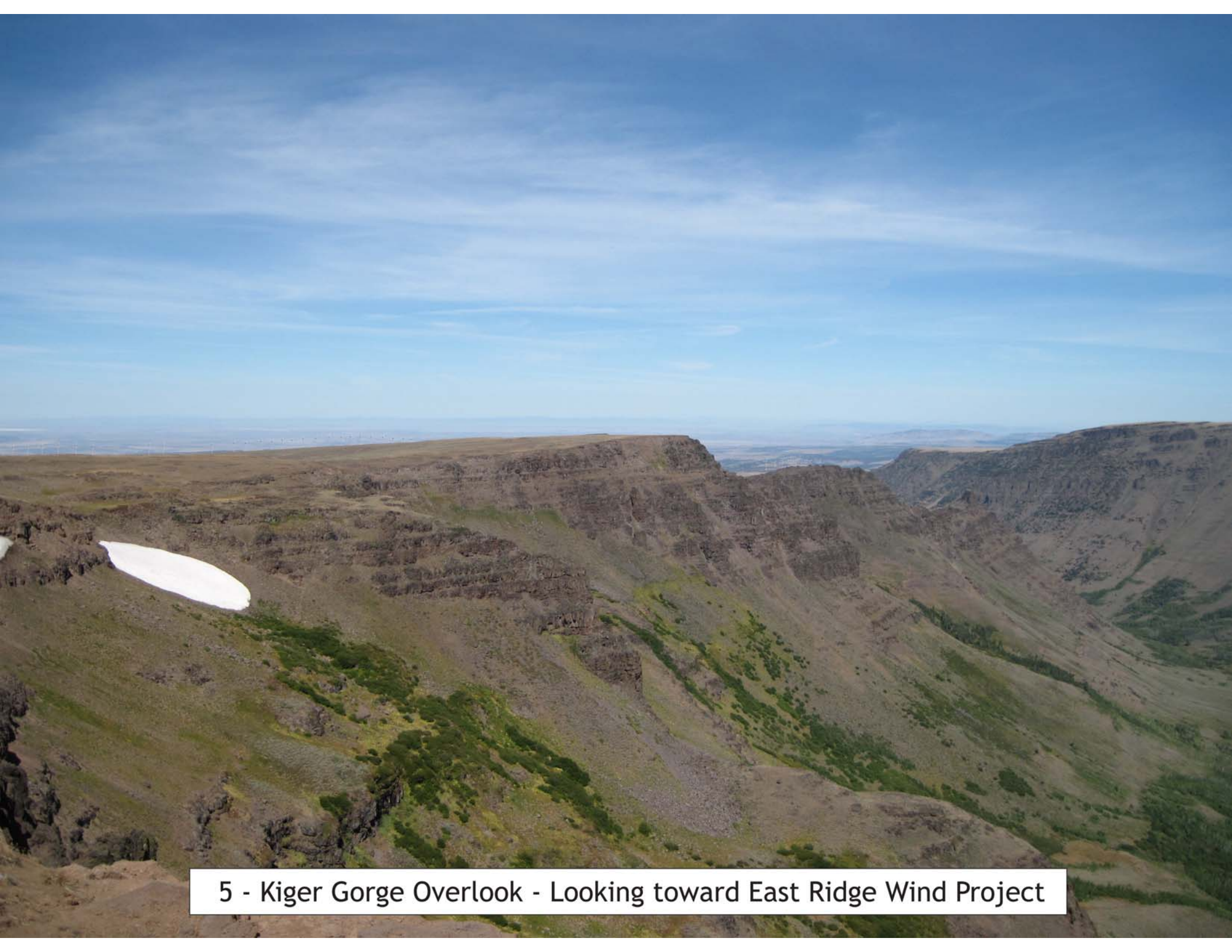
2 - Round Barn Visitor Center - Looking at Riddle Mountain Wind Project



3 - Frenchglen - Looking at West Ridge Wind Project



4 - Whorehouse Meadow - Looking at East Ridge Wind Project



5 - Kiger Gorge Overlook - Looking toward East Ridge Wind Project



6 - Kiger Gorge Overlook - Looking at East Ridge Wind Project



7 - East Rim Overlook - Looking at Echanis Wind Project



8 - Mann Lake - Looking west at Echanis Wind Project